

About Circuit Desk:

අලුත් අලුත් දෑ නොකනන ජාතිය ලොව නොනගී
-කුමාරතුංග මුනිදාස

Co-founded in 2016 by two Sri Lankan Electrical and Electronic Engineers for making a home for inventions. Circuit Desk is a place where we bring ideas into reality to provide solutions to the problems you encounter in your day-to-day life and make the world a better place for everyone. Our goal is to provide the best solutions at an affordable price so that everyone can benefit.

Contact Us:

Phone 076 606 0254
Email info@circuitdesk.com
Web www.circuitdesk.com
Facebook www.facebook.com/circuitdesk

For more innovative products:

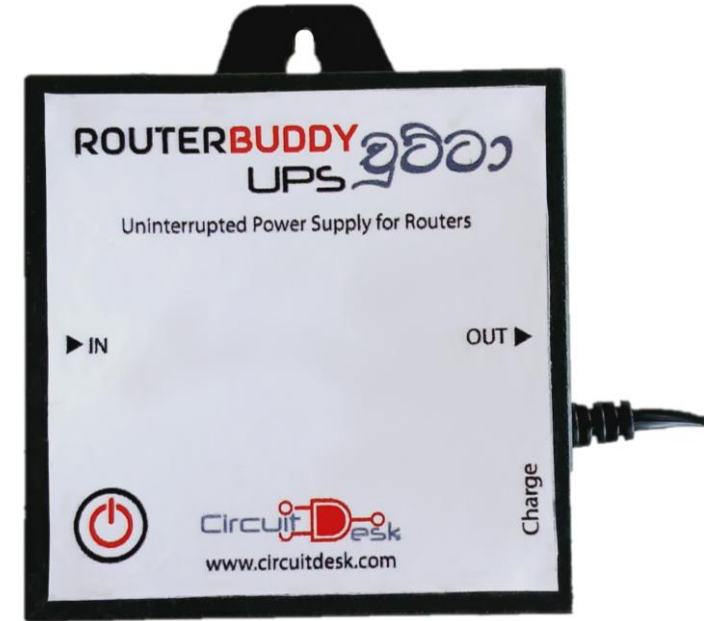
Please visit our shop on daraz.lk www.daraz.lk/shop/circuit-desk
Visit our direct store for better price offers www.circuitdesk.com



Circuit Desk (Pvt) Ltd
Sigiri, Sethsiri Mawatha, Kithulampitiya, Galle

ROUTERBUDDY ඉව්වා UPS

Mini DC UPS for Routers & Electronic Devices
RBUC05/RBUC09/RBUC12



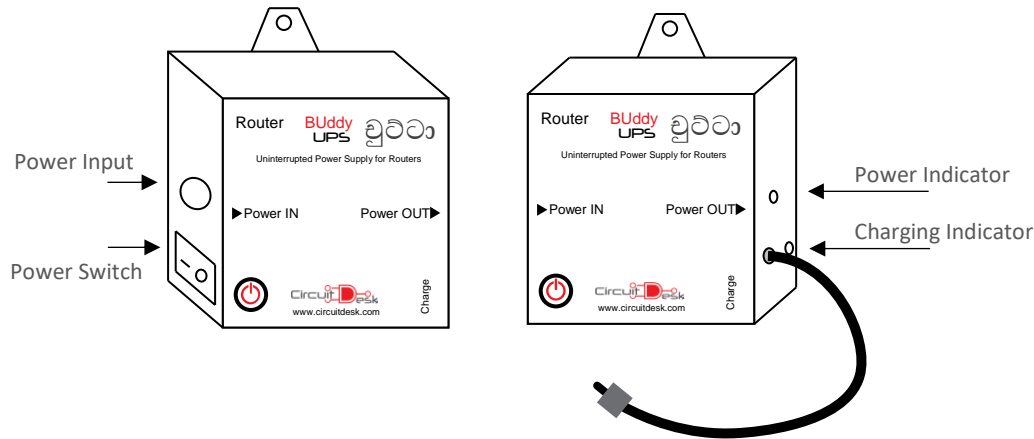
www.circuitdesk.com

Introduction:

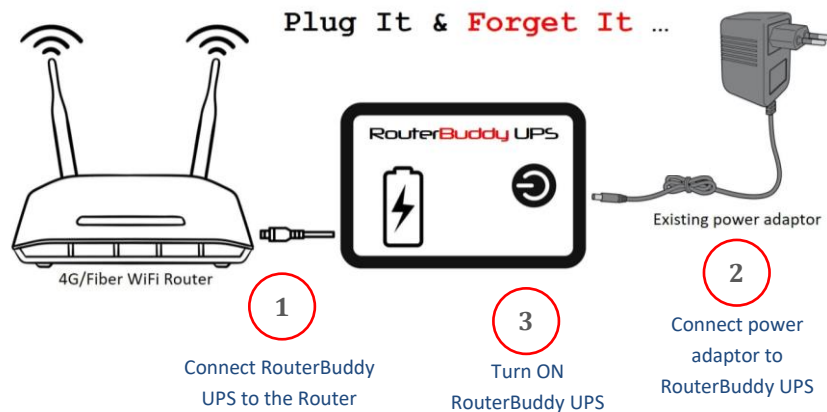
Designed and developed for Sri Lankans by Sri Lankan Engineers at Circuit Desk maintaining the highest quality and employing the latest and intelligent technology. RouterBuddy UPS ඩුට්ටා is a fully automated set and forget uninterruptible power supply system for 5V/9V/12V low power routers and other compatible electronic devices which brings you the peace of mind with a truly uninterrupted experience during mains power outages and glitches.

Switching between mains power and battery power happens within a zero delay so that the load device will not experience any switching effect.

Device Overview:



Set up in 3 easy steps:



Power Indicator:

Indicator	Status
RED	Power output is available
OFF	Mains power is not available & Battery is fully drained or UPS switch is off

Charging Indicator:

Indicator	Status
BLUE/GREEN	Battery is fully charged
RED/YELLOW	Battery is charging

Specification:

Parameter	RBUC05	RBUC09	RBUC12
Voltage In	5V DC	9V DC	12V DC
Voltage Out	5V DC	9V DC	12V DC
Peak Power	10W	9W	18W
Input Port	5.5x2.1mm DC female socket / USB-A male plug (in 5V USB version)		
Output Connector	5.5x2.1mm DC barrel plug / USB-A female socket (in 5V USB version)		

Note:

- UPS power switch should always be kept turned ON when in use.
- Don't connect devices which have higher power ratings than the maximum output power supported by the UPS unit.
- If you experience a device restart after fully drained battery, please check your power adaptor to see if it can deliver at least 2A of current. Otherwise, the current from the power adaptor may not be enough to charge batteries while feeding the connected device.
- Battery backup time varies based on the connected router/device and its power consumption. The higher the power consumption, the lower the backup time.