

## About Circuit Desk:

අලුත් අලුත් දෑ නොකනන ජාතිය ලොව නොනගී  
-කුමාරතුංග මුනිදාස

Co-founded in 2016 by two Sri Lankan Electrical and Electronic Engineers for making a home for inventions. Circuit Desk is a place where we bring ideas into reality to provide solutions to the problems you encounter in your day-to-day life and make the world a better place for everyone. Our goal is to provide the best solutions at an affordable price so that everyone can benefit.

## Contact Us:

Phone 076 606 0254  
Email [info@circuitdesk.com](mailto:info@circuitdesk.com)  
Web [www.circuitdesk.com](http://www.circuitdesk.com)  
Facebook [www.facebook.com/circuitdesk](https://www.facebook.com/circuitdesk)

## For more innovative products:

Please visit our shop on daraz.lk [www.daraz.lk/shop/circuit-desk](http://www.daraz.lk/shop/circuit-desk)

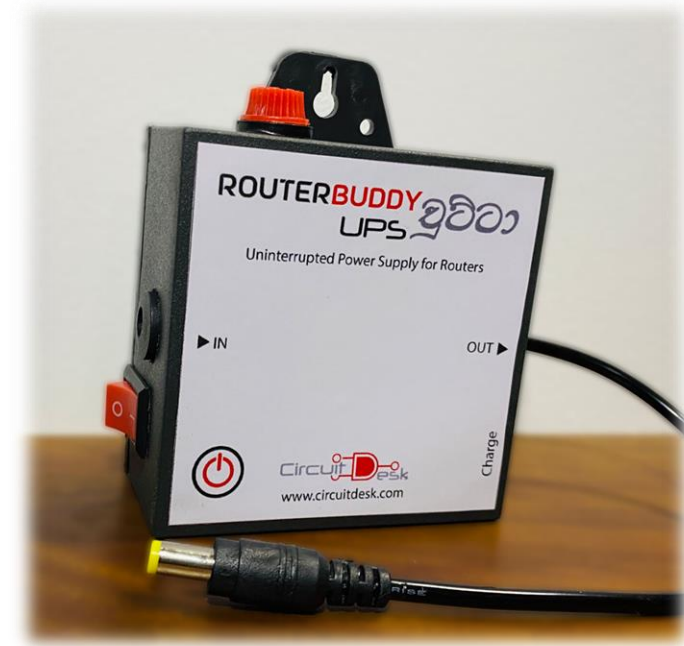


### Circuit Desk

Sigiri, Sethsiri Mawatha, Kithulampitiya, Galle  
Reg:1/15/185/2019-12-04/11

# ROUTERBUDDY UPS ඉව්වා

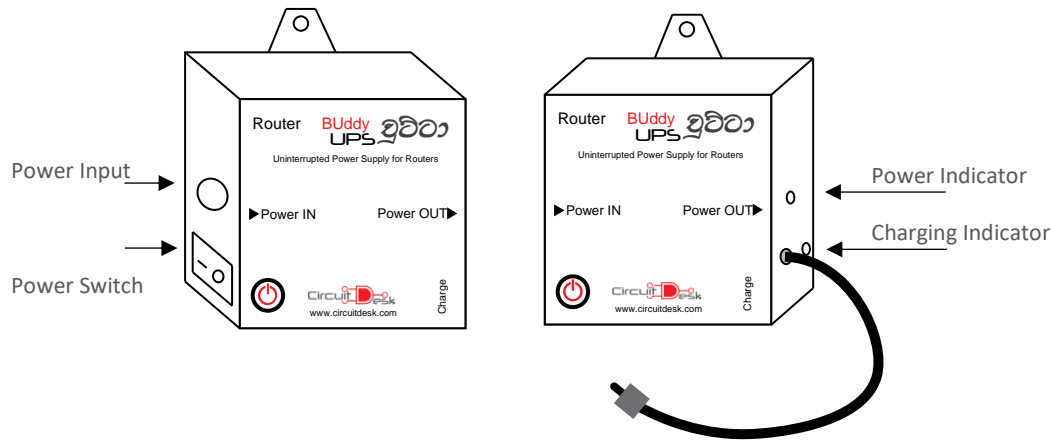
## Mini DC UPS for Routers RBUC09/RBUC12



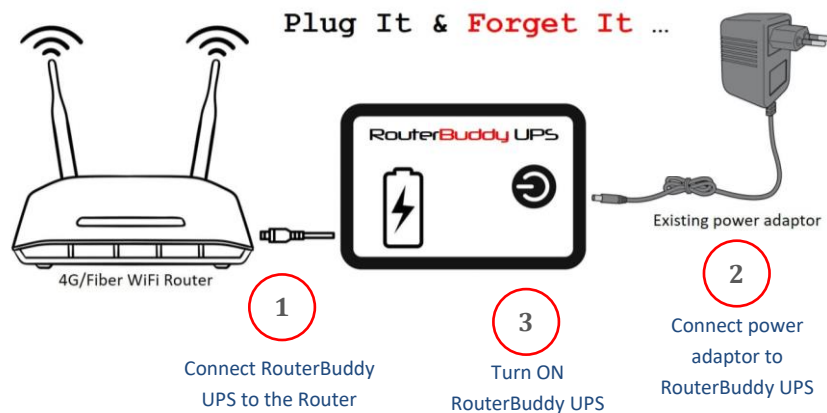
## Introduction:

Designed and developed for Sri Lankans by Sri Lankan Engineers at Circuit Desk maintaining the highest quality and employing the latest and intelligent technology, RouterBuddy UPS *ඉඩ්ඩා* is a set and forget uninterruptible power supply system for 9V/12V low power routers which will give you the peace of mind of truly uninterrupted internet experience while giving up to unbeatable 2 hours\* of run time during a power cut.

## Device Overview:



## Set up in 3 easy steps:



## Power Indicator:

Indicator	Status
RED	Power output is available
OFF	Mains power is not available & Battery is fully drained or UPS switch is off

## Charging Indicator:

Indicator	Status
BLUE	Battery is fully charged
RED	Battery is charging
BLUE+RED Mix	Switch if turned off. Please turn on the switch

## Specification:

	RBUC09	RBUC12
Voltage In	9V DC	12V DC
Voltage Out	9V DC	12V DC
Peak Power	9W	12W
Vin Port	2.1mm DC	2.1mm DC
Vout Connector	2.1mm DC	2.1mm DC

## Note:

- UPS switch should always be kept turned on, unless unit is disconnected from the router
- If you are experiencing a restart after fully drained battery, please check your power adaptor to see if it can deliver at least 2A of current.
- \*Run time may vary based on the Router and its power consumption. Figure shown here is based on the routers tested.